

Physical Dimension Testing

Thermal and SEMG testing:

Both of these tests are to look at the health of your nervous system, which is the most important “system” of the body. It is responsible for the communication between all points of your body, particularly between the brain, organs and muscles. The nervous system is comprised of 3 branches- the sensory, which is responsible for the sensations that you feel, including pain. The autonomic (or automatic) system is responsible for the communication between the organs and the brain, and lastly the motor nervous system, which controls the communication between the brain and the muscles. As nerves come from the brain, through the cord, down the spinal canal (which is located within the center of your spine), they branch out like roots from the cord at each spinal segment (called vertebrae), both right and left side. Each root has the three branches – the sensory, autonomic, and motor, which feed the sensory systems, organs and muscles located at that level. If the nerve is damaged, it affects their function.

Thermal scanning:

We are measuring temperature differences from right side to left side at each level of the spine, where the nerve roots exit the spine to branch out and control the sensory, autonomic, and motor.

Specifically, the autonomic system is responsible for the control of the organs, glands, and blood flow of the body. This system is responsible for the automatic functions of the body- blood flow, organ function, glandular function, metabolism, and temperature. We measure temperature differences between the right side and left side of the body, and if the autonomic system is functioning properly, it should easily keep those differences to a minimum. On your graph, this is reflected as white boxes showing up on both sides of the spine. Any colors you see are showing a greater than normal temperature difference, green being a mild imbalance, blue is moderate, and red is severe. The higher the level of temperature difference noted, the greater the imbalance. When there is a greater than normal difference, this reflects an inability of the autonomic system to maintain balance at that level, indicating that there is some issue with the organs, glands, metabolism or blood flow at that level. Behind your graph you will find a chart showing the specific organs and glands each nerve level controls. An imbalance at this level could indicate an issue with these organs, and at least reflects a stress on that particular level, which could affect that organ or gland.

SEMG;

This stands for Surface electromyography. This method uses electronic sensors to measure the electrical activity of the muscles at each level of the spine. The amount of electrical activities corresponds to the amount of tension in the muscles. The muscular system provides movement to our bodies, and our bodies are dependent on normal, balanced movement. This is known as the motor nervous system. A “normal” graph is shown in your book, and the pattern has a pear shape, or a vase shape. The white boxes indicate normal tension (or electrical) activity. Like the thermal graph, the colors indicate a higher or lower amount of tension than normal; green is a mild increase, blue- moderate, and red- severe. Black means extremely high, or off of the chart, and yellow indicates less than normal muscle tension. When there is too much tension, this could indicate a spasm or compensation by the body for unbalanced movement somewhere else in the body. When tension patterns are abnormal, movement is unbalanced, which could create joint injury, nerve injury, or muscle spasm.

Thermal Scan (example)

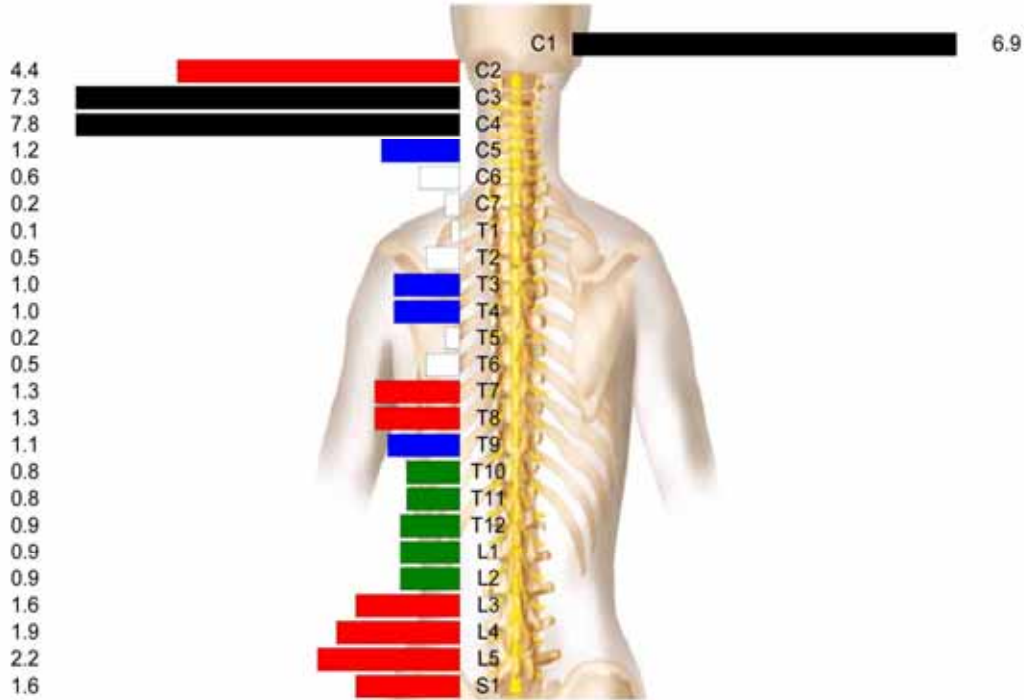
39 year old female after an auto accident
 Headaches, neck pain, foggy head symptoms
Initial Scan

Practice Name:
Practice Address:

Dr. Jeff Donahue
1744 S. Val Vista Drive
Suite 214
Mesa, AZ 85204

Rolling Thermal Scan NCM Bar Graph on (05/23/2008 01:48 PM)
 6 degrees Farenheit

+1 +2 +3

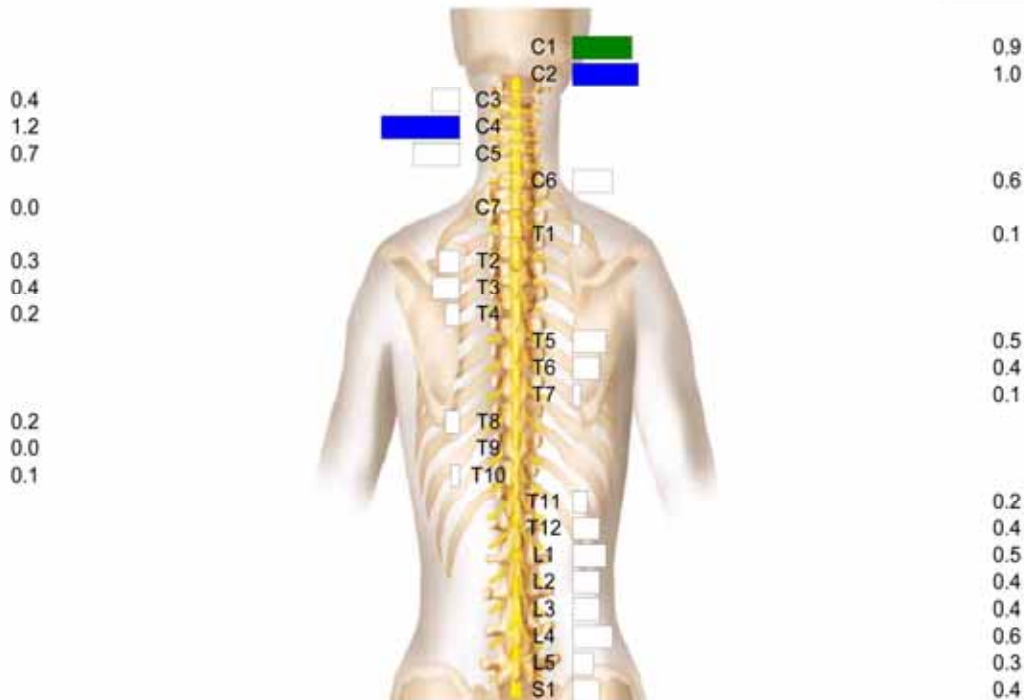


Follow up Scan

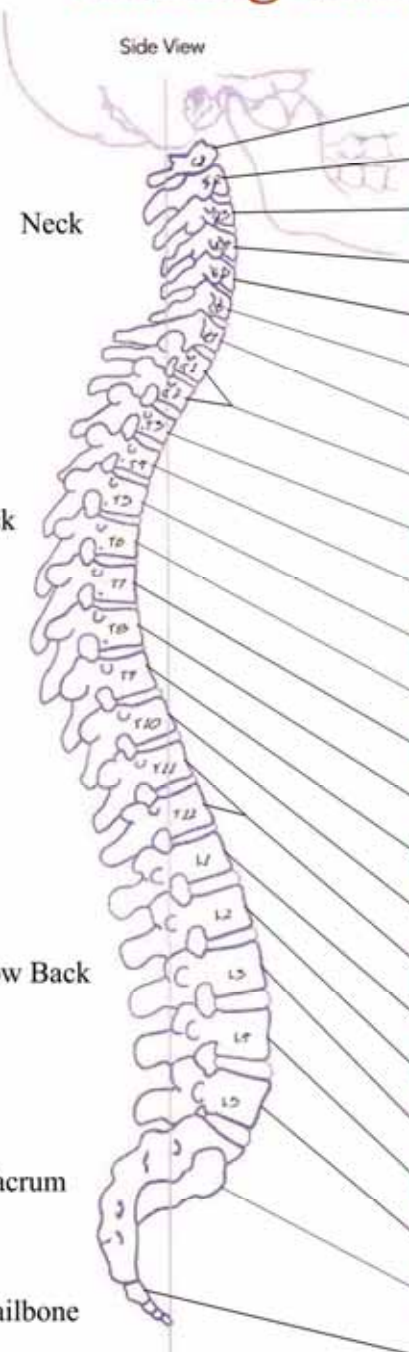
complete resolution of all symptoms from the car accident

Rolling Thermal Scan NCM Bar Graph on (07/14/2008 05:04 PM)
 6 degrees Farenheit

+1 +2 +3



Subluxations interfere with the nervous system causing malfunction and breakdown



Spinal Level	Organs/Effects	Common Symptoms
C1	Food sensitivity, structures of the head	Spacey, dizzy, low energy, memory trouble, brain fog, headaches, sore throat, colds/flu, ear ache, etc.
C2	Sinuses	Sinus problems, snoring
C3	Diaphragm	Difficult to take a deep breath, chronic fatigue, anxiety, vertigo, shortness of breath
C4	Thyroid	Low = weight gain, feelings of being cold High = insomnia, nervous
C5	Sugar handling, nerves to shoulders, arms & hands	Craving sweets, tired after eating, headaches if too long between meals, emotional instability, heart palpitations
C6	Stomach	Stomach pain after eating, takes antacids
C7	Liver	Headaches, lethargy, sneezing, nightmares, burning feet
T1/T2	Heart	Coronary heart disease, functional heart conditions, chest pain
T3	Lungs & bronchi	Bronchial asthma, shortness of breath, chronic cough
T4	Gall Bladder	Heartburn, bloating after meals, gassy, burping, trouble with fatty foods
T5	Stomach	Heartburn, indigestion, stomach troubles, ulcers
T6	Pancreas	Craving sweets, tired after eating, headaches if too long between meals, emotional instability, heart palpitations
T7	Spleen/Immune Function	Lowered resistance, immune deficiencies, frequent colds/flu
T8	Liver	Headaches, lethargy, sneezing, nightmares, burning feet
T9	Adrenal Glands	Overwhelmed by stress
T10	Small intestine	Digestive complaints (1-2 hours after eating)
T11/T12	Kidneys & bladder	Decreased urine output, swollen ankles, puffy eyelids, bladder infection
L1	Ileocecal valve	Bad breath, flatulence, headache when sleeping to long, dark circles under the eyes, toxicity
L2	Cecum	Digestive complaints (1-2 hours after eating), abdominal cramps
L3	Endocrine glands (thyroid, pancreas, liver, adrenals)	See primary subluxation sites
L4	Colon	Bowel problems, coated tongue, headaches, lower back pain, lower back muscle trouble
L5	Prostate or uterus	Prostate problems, dysmenorrhea (PMS)
Sacrum	Reproductive organs, nerves to hips & legs	Reproductive disorders, hip & leg pain
Coccyx	Overall tone of the nervous system	PMS, migraine, compulsive disorders, dysmenorrhea, impotence, infertility, dyslexia, chronic depression, vertigo, epilepsy, ADHD, sensitivity to light

Adjustments correct subluxations so your body can heal and function at higher levels

REFERENCES: Fick, J. D., Ph.D., *Neuroanatomy, 3rd Edition*, Lippincott Williams & Wilkins, 2002; Kandel, E.R., Schwartz, J.H., Jessell, T.M., *Principles of Neural Science*, Appleton & Lange, 1991; Hoppenfeld, S. M.D., *Physical Examination of the Spine and Extremities*, Appleton-Century-Crofts, 1976; Netter, F.H. M.D., *The CIBA Collection of Medical Illustrations, Vol 1, Nervous System, Part 1, Anatomy and Physiology*, Ciba Pharmaceuticals Division, Ciba-Geigy Corp, 1991.

*This chart has been simplified for demonstrative purposes. It does not reflect all the structures or paths utilized in nerve transmission.

Special thanks and recognition to Dr. Nicolai Lennox in the creation of this chart.

SEMG Scan (Example)

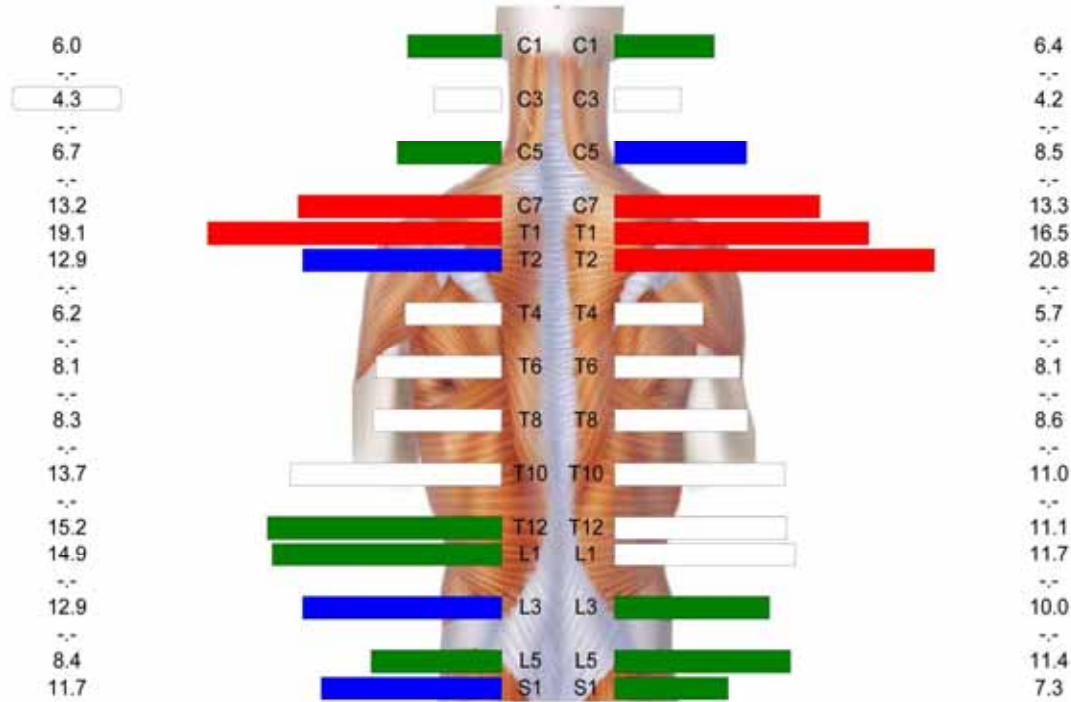
42 year old male with neck and shoulder pain, and left lower back pain.

Dr. Jeff Donahue
1744 S. Val Vista Drive
Suite 214
Mesa, AZ 85204

Initial Scan

Static EMG Scan EMG Amplitude on (10/15/2008 04:16 PM)
25 uV Scale Position: Seated Action: Neutral

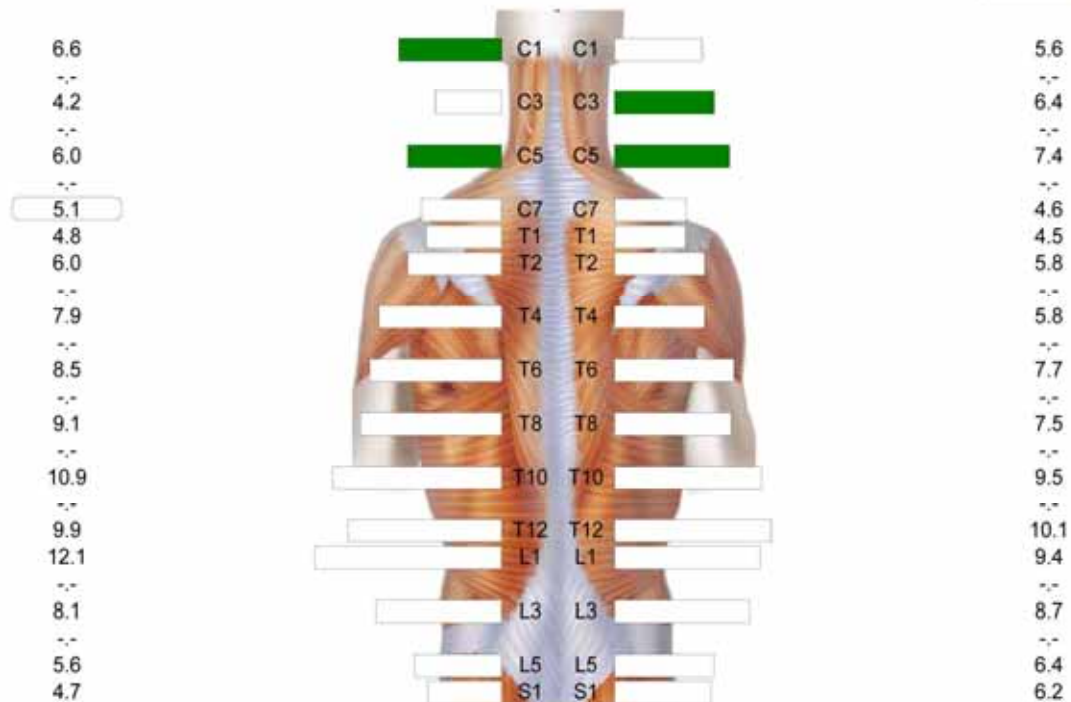
+1 +2 +3



Follow up scan- No pain or discomfort. Client is regularly doing his exercises,

Static EMG Scan EMG Amplitude on (12/29/2008 04:00 PM)
25 uV Scale Position: Seated Action: Neutral

+1 +2 +3



SEMG Scan

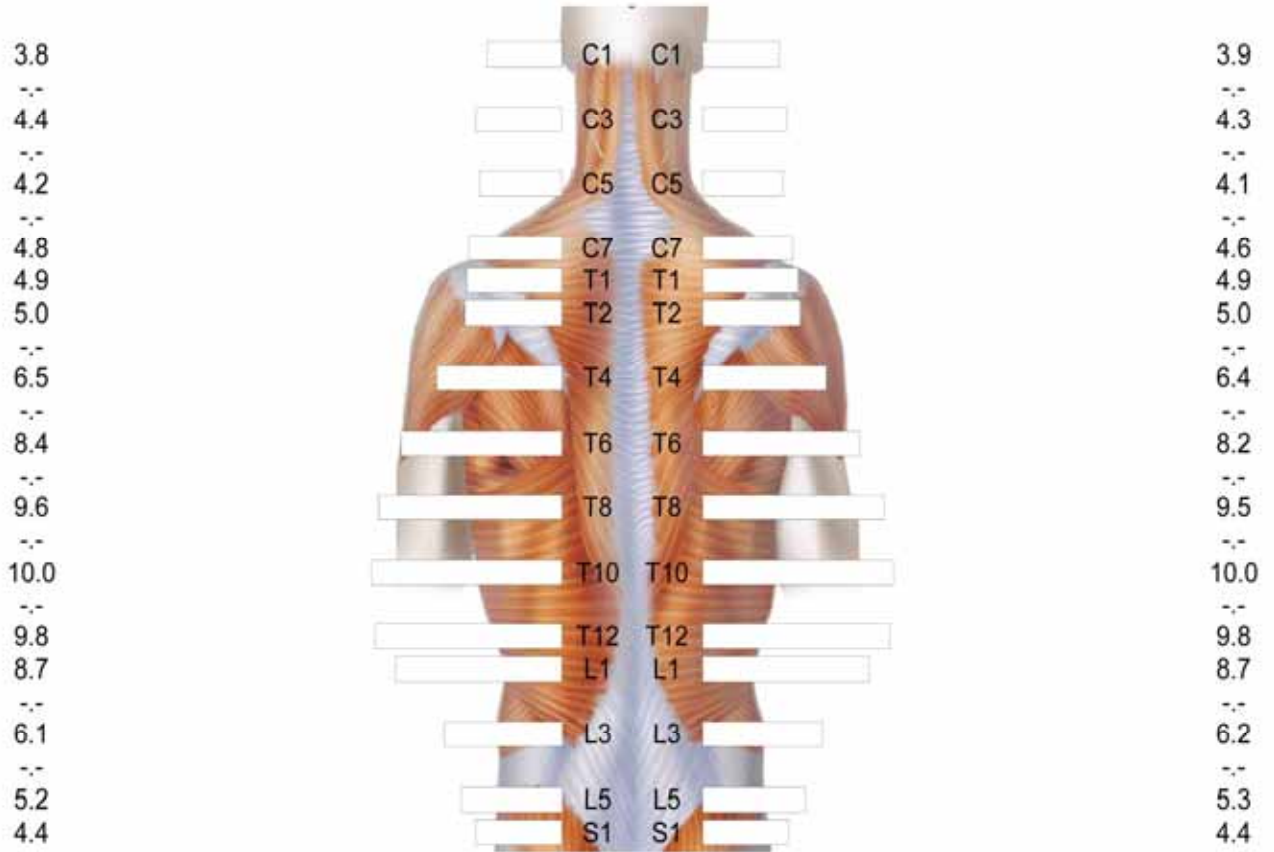
Practice Name:
Practice Address:

Dr. Jeff Donahue
1744 S. Val Vista Drive
Suite 214
Mesa, AZ 85204

"Normal" Scan - This is what we would like to see.

Static EMG Scan NORMATIVE DATA

25 uV Scale Position: Seated Action: Neutral



Subluxations interfere with the nervous system causing malfunction and breakdown

Spinal Level	Organs/Effects	Common Symptoms
C1	Food sensitivity, structures of the head	Spacey, dizzy, low energy, memory trouble, brain fog, headaches, sore throat, colds/flu, ear ache, etc.
C2	Sinuses	Sinus problems, snoring
C3	Diaphragm	Difficult to take a deep breath, chronic fatigue, anxiety, vertigo, shortness of breath
C4	Thyroid	Low = weight gain, feelings of being cold High = insomnia, nervous
C5	Sugar handling, nerves to shoulders, arms & hands	Craving sweets, tired after eating, headaches if too long between meals, emotional instability, heart palpitations
C6	Stomach	Stomach pain after eating, takes antacids
C7	Liver	Headaches, lethargy, sneezing, nightmares, burning feet
T1/T2	Heart	Coronary heart disease, functional heart conditions, chest pain
T3	Lungs & bronchi	Bronchial asthma, shortness of breath, chronic cough
T4	Gall Bladder	Heartburn, bloating after meals, gassy, burping, trouble with fatty foods
T5	Stomach	Heartburn, indigestion, stomach troubles, ulcers
T6	Pancreas	Craving sweets, tired after eating, headaches if too long between meals, emotional instability, heart palpitations
T7	Spleen/Immune Function	Lowered resistance, immune deficiencies, frequent colds/flu
T8	Liver	Headaches, lethargy, sneezing, nightmares, burning feet
T9	Adrenal Glands	Overwhelmed by stress
T10	Small intestine	Digestive complaints (1-2 hours after eating)
T11/T12	Kidneys & bladder	Decreased urine output, swollen ankles, puffy eyelids, bladder infection
L1	Ileocecal valve	Bad breath, flatulence, headache when sleeping to long, dark circles under the eyes, toxicity
L2	Cecum	Digestive complaints (1-2 hours after eating), abdominal cramps
L3	Endocrine glands (thyroid, pancreas, liver, adrenals)	See primary subluxation sites
L4	Colon	Bowel problems, coated tongue, headaches, lower back pain, lower back muscle trouble
L5	Prostate or uterus	Prostate problems, dysmenorrhea (PMS)
Sacrum	Reproductive organs, nerves to hips & legs	Reproductive disorders, hip & leg pain
Coccyx	Overall tone of the nervous system	PMS, migraine, compulsive disorders, dysmenorrhea, impotence, infertility, dyslexia, chronic depression, vertigo, epilepsy, ADHD, sensitivity to light

Adjustments correct subluxations so your body can heal and function at higher levels

REFERENCES: Fick, J. D., Ph.D., *Neuroanatomy, 3rd Edition*, Lippincott Williams & Wilkins, 2002; Kandel, E.R., Schwartz, J.H., Jessell, T.M., *Principles of Neural Science*, Appleton & Lange, 1991; Hoppenfeld, S. M.D., *Physical Examination of the Spine and Extremities*, Appleton-Century-Crofts, 1976; Netter, F.H. M.D., *The CIBA Collection of Medical Illustrations, Vol 1, Nervous System, Part 1, Anatomy and Physiology*, Ciba Pharmaceuticals Division, Ciba-Geigy Corp, 1991.

*This chart has been simplified for demonstrative purposes. It does not reflect all the structures or paths utilized in nerve transmission.

Special thanks and recognition to Dr. Nicolai Lennox in the creation of this chart.